

A5, The Warehouse Apartments,
Victoria Street, Preston, Lancashire

Asking Price: £200,000

 **Reeds Rains**

reedsrains.co.uk

A5, The Warehouse Apartments, Victoria Street, Preston, Lancashire

Asking Price: £200,000

Ideal investment opportunity for a six bedroom student accommodation. This property is an ideal investment opportunity for anyone who wants to sit back and see the money roll in. This six bedroom apartment is set up for student accommodation. The property is occupied 43 weeks of the year and is run by its own on-site management. The property comprises of entrance hall, four bedrooms all with en-suites and a communal lounge open plan into the kitchen. Within walking distance from the Train...

Bedroom
19'6" x 7'11" (5.94m x 2.41m)
Double glazed window. Electric heater. Fitted bed, desk and wardrobes. Ceiling light point and door to the en-suite.

En-suite Shower Room
Three piece suite comprising of shower cubicle, pedestal wash hand basin and low level WC. Fully tiled walls. Ceiling light point and extractor fan.

Bedroom
19'6" x 7'11" (5.94m x 2.41m)
Double glazed window. Electric heater. Fitted bed, desk and wardrobes. Ceiling light point and door to the en-suite.

En-suite Shower Room
Three piece suite comprising of shower cubicle, pedestal wash hand basin and low level WC. Fully tiled walls. Ceiling light point and extractor fan.

Bedroom
19'6" x 7'11" (5.94m x 2.41m)
Double glazed window. Electric heater. Fitted bed, desk and wardrobes. Ceiling light point and door to the en-suite.

En-suite Shower Room
Three piece suite comprising of shower cubicle, pedestal wash hand basin and low level WC. Fully tiled walls. Ceiling light point and extractor fan.

Bedroom
19'6" x 7'11" (5.94m x 2.41m)
Double glazed window. Electric heater. Fitted bed, desk and wardrobes. Ceiling light point and door to the en-suite.

En-suite Shower Room
Three piece suite comprising of shower cubicle, pedestal wash hand basin and low level WC. Fully tiled walls. Ceiling light point and extractor fan.

En-suite Shower Room
Three piece suite comprising of shower cubicle, pedestal wash hand basin and low level WC. Fully tiled walls. Ceiling light point and extractor fan.

Bedroom
19'6" x 7'11" (5.94m x 2.41m)
Double glazed window. Electric heater. Fitted bed, desk and wardrobes. Ceiling light point and door to the en-suite.

En-suite Shower Room
Three piece suite comprising of shower cubicle, pedestal wash hand basin and low level WC. Fully tiled walls. Ceiling light point and extractor fan.

Bedroom
19'6" x 7'11" (5.94m x 2.41m)
Double glazed window. Electric heater. Fitted bed, desk and wardrobes. Ceiling light point and door to the en-suite.

Entrance Hall
Secured intercom. Ceiling light point. Door to the boiler room. Doors to the bedrooms and the communal living room.

Communal Entrance
Secured intercom. Access to the apartment.

Ground Floor
Secured intercom. Ceiling light point. Door to the boiler room. Doors to the bedrooms and the communal living room.

Communal Lounge

Open plan communal area.

Open Plan Kitchen
Open plan living space into the kitchen. The kitchen benefits from modern wall and base units with contrasting work surfaces incorporating breakfast bar, electric oven and hob. Integrated appliances. Single stainless steel bowl and drainer. Part tiled walls. Ceiling light point and electric heater.

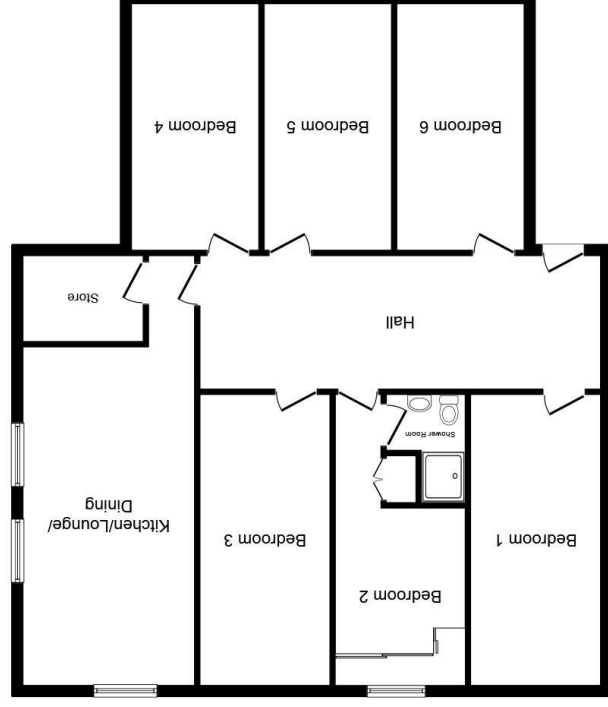
Reeds Rains Limited Registered in England at 2nd Floor, Gateway 2, Holgate Park Drive, York, YO26 4GB
Registered Number 2568254. VAT Reg No. 842 795 983.

All Measurements are Approximate.

Laser Tape Clause
All measurements have been taken using a laser tape measure and therefore, may be subject to a small margin of error.



For full EPC please contact the branch.



Floor Plan

Total floor area 124.0 sq. m. (1,335 sq. ft.) approx
This floor plan is for illustrative purposes only. It is not drawn to scale. Any measurements, floor areas (including any total floor area), openings and orientation are approximate. No details are guaranteed, they cannot be relied upon for any purpose and they do not form part of any agreement. No liability is taken for any error, omission or misstatement. A party must rely upon its own inspection(s). Plan produced for Reed Rains. Powered by www.focalagent.com

Floorplan Clause
Measurements are approximate. Not to Scale. For illustrative purposes only.

We may refer you to recommended providers of ancillary services such as Conveyancing, Mortgages, Insurance and Surveying. We may receive a referral fee for recommending their services. You are not under any obligation to use the services of the recommended provider, which may also be an associated company of Reeds Rains.