

Apartment 19 River View, High Street, Garstang, Preston, Lancashire, PR3

**£1,050 per month**  
**Unfurnished**

 **Reeds Rains**

[reedsrains.co.uk](https://reedsrains.co.uk)



Apartment 19 River View, High Street, Garstang, Preston, Lancashire, PR3  
£1,050 per month Unfurnished

Council Tax Band:  
EPC Rating: B

\*\*\*BEAUTIFUL, MODERN APARTMENT IN THE RIVER VIEW DEVELOPMENT OFFERING VARIOUS AMENITIES ON YOUR DOORSTEP\*\*\* EPC GRADE B. These stunning apartments provide modern, open plan living and simply must be viewed to appreciate the quality on offer. If you're looking for the easy life then look no further as the high street on your door step offers a great selection of amenities, bars and restaurants. Commuters will benefit from the easily accessible A6 by pass road providing connecting links to the...

Laser Tape Clause  
All measurements have been taken using a laser tape measure and therefore, may be subject to a small margin of error.

Floorplan Clause  
Measurements are approximate. Not to Scale. For illustrative purposes only.

Second Floor

Entrance Hall

Diner/Kitchen/Living Room  
22'6" x 15'1" (6.86m x 4.6m)

Bedroom 1  
9'6" x 9'2" (2.9m x 2.8m)

Bedroom 2  
11'4" x 5'9" (3.45m x 1.75m)

Bathroom

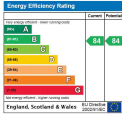
Balcony  
21'2" x 7'1" (6.45m x 2.16m)

EPC  
Grade B.

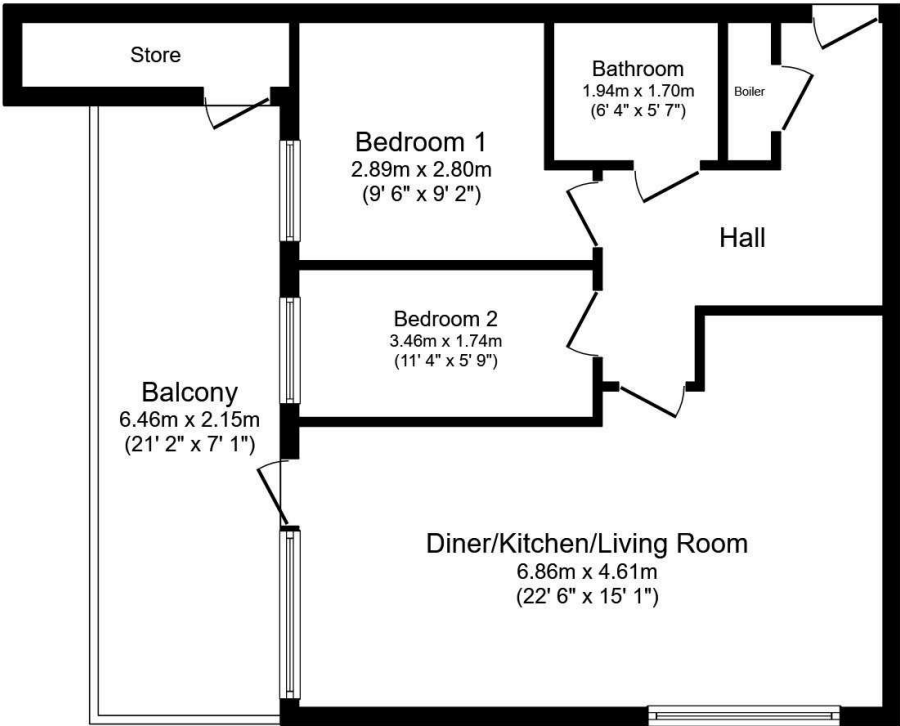
Reeds Rains Limited Registered in England at Howard House, 3 St Mary's Court, Blossom Street, York, YO24 1AH  
Registered Number 2568254. VAT Reg No. 842 795 983.

All Measurements  
All Measurements are Approximate.

We may refer you to recommended providers of ancillary services such as Conveyancing, Mortgages, Insurance and Surveying. We may receive a referral fee for recommending their services. You are not under any obligation to use the services of the recommended provider, which may also be an associated company of Reeds Rains.



For full EPC please contact the branch.



Total floor area 57.7 sq.m. (621 sq.ft.) approx

This floor plan is for illustrative purposes only. It is not drawn to scale. Any measurements, floor areas (including any total floor area), openings and orientation are approximate. No details are guaranteed, they cannot be relied upon for any purpose and they do not form part of any agreement. No liability is taken for any error, omission or misstatement. A party must rely upon its own inspection(s). Plan produced for Reed Rains. Powered by [www.focalagent.com](http://www.focalagent.com)