

Apartment 308, Strand Street,
Liverpool, Merseyside

£1,100 per month Furnished

 **Reeds Rains**

[reedsrains.co.uk](https://www.reedsrains.co.uk)

Apartment 308, Strand Street, Liverpool, Merseyside
£1,100 per month Furnished

**ZERO DEPOSIT GUARANTEE SCHEME
AVAILABLE **

AVAILABLE NOW

EPC Grade - C
Council Tax Band - C

IMPRESSIVE LOCATION! This apartment is situated in a prime position in the heart of Liverpool ONE, situated on third floor.

The accommodation comprises entrance hall, an open plan lounge/diner/fitted kitchen, two double bedrooms (the master bedroom having an en-suite shower room) and principal bathroom.

The corner apartment has large double glazed windows. There is also 24 hour...

GROUND FLOOR

Communal Entrance

Lift and stairs to all floors. Post room.

THIRD FLOOR

Entrance Hall

Built in laundry cupboard housing washing machine.

Living Room/Kitchen

19' x 16'1" (5.8m x 4.9m)

Bedroom 1

11'6" x 11'6" (3.5m x 3.5m)

En-Suite

Bedroom 2

12'6" x 8'2" (3.8m x 2.5m)

Family Bathroom

We may refer you to recommended providers of ancillary services such as Conveyancing, Mortgages, Insurance and Surveying. We may receive a referral fee for recommending their services. You are not under any obligation to use the services of the recommended provider, which may also be an associated company of Reeds Rains.

External

Communal gardens and roof top seating.

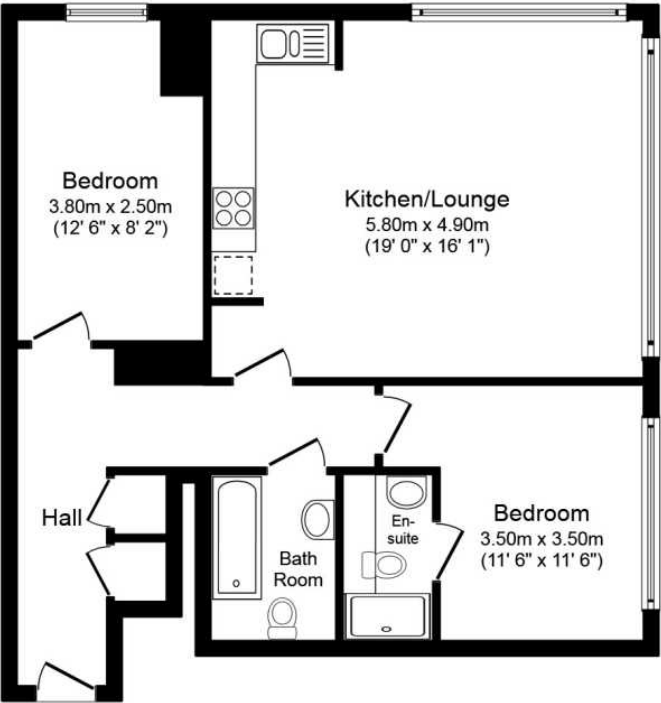
Reeds Rains Limited Registered in England at Howard House, 3 St Mary's Court, Blossom Street, York, YO24 1AH
Registered Number 2568254. VAT Reg No. 842 795 983.

All Measurements
All Measurements are Approximate.

Laser Tape Clause
All measurements have been taken using a laser tape measure and therefore, may be subject to a small margin of error.

Floorplan Clause
Measurements are approximate. Not to Scale. For illustrative purposes only.

For full EPC please contact the branch.



Floor Plan

Total floor area 69.0 sq. m. (743 sq. ft.) approx
This plan is for illustration purposes only and may not be representative of the property. Plan not to scale.

Powered by audioagent.com