

Glebe Street, Castleford

£700 per month Unfurnished

 **Reeds Rains**

[reedsrains.co.uk](https://www.reedsrains.co.uk)

Glebe Street, Castleford
£700 per month Unfurnished

A newly refurbished TWO BEDROOM terrace home located within walking distance of Castelford town centre providing many amenities and train and bus stations. A viewing is highly recommended of this well finished home.

Ground Floor

Entrance Hall

Dining Room

12'2" x 10'10" (3.7m x 3.3m)

With new decor and carpet flooring.

Living Room

14'1" x 13'1" (4.3m x 4m)

With neutral decor and carpet flooring.

Electric fire set in feature hearth and surround.

Window overlooking rear yard area. Door

leading to kitchen. Stairs leading to the first floor.

Kitchen

10'6" x 6'11" (3.2m x 2.1m)

A brand newly fitted kitchen fitted with a good range of wall and base units, with contrasting work surfaces and splash back tiling.

Integrated electric oven and gas hob with extractor unit over. Tile effect flooring. Neutral decor and door to rear yard.

First Floor Landing

Bedroom

14'1" x 12'2" (4.3m x 3.7m)

Double bedroom, to front asepect with carpet flooring and neutral decor.

Bedroom

13'1" x 11'2" (4m x 3.4m)

Further good sized double to rear aspect, carpet flooring and neutral decor.

Bathroom

10'6" x 6'11" (3.2m x 2.1m)

A newly fitted four peice bathroom suite

comprising of shower cubicle, bath, pedestal hand wash basin and low flush WC. Vinly flooring and neutral decor.

Garden

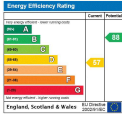
Street parking to the front and to the rear a small yard area. Outbuilding to rear providng good storage.

Reeds Rains Limited Registered in England at 2nd Floor, Gateway 2, Holgate Park Drive, York, YO26 4GB
Registered Number 2568254. VAT Reg No. 842 795 983.

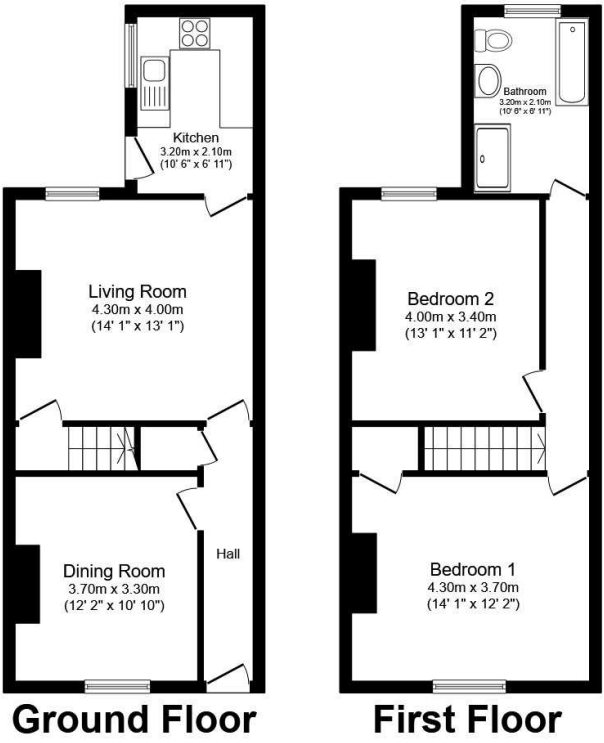
All Measurements
All Measurements are Approximate.

Laser Tape Clause
All measurements have been taken using a laser tape measure and therefore, may be subject to a small margin of error.

Floorplan Clause
Measurements are approximate. Not to Scale. For illustrative purposes only.



For full EPC please contact the branch.



Total floor area 88.7 sq.m. (955 sq.ft.) approx

This floor plan is for illustrative purposes only. It is not drawn to scale. Any measurements, floor areas (including any total floor area), openings and orientation are approximate. No details are guaranteed, they cannot be relied upon for any purpose and they do not form part of any agreement. No liability is taken for any error, omission or misstatement. A party must rely upon its own inspection(s). Plan produced for Reed Rains. Powered by www.focalagent.com

We may refer you to recommended providers of ancillary services such as Conveyancing, Mortgages, Insurance and Surveying. We may receive a referral fee for recommending their services. You are not under any obligation to use the services of the recommended provider, which may also be an associated company of Reeds Rains.