

Wood Street, Widnes, Cheshire
£595 per month Unfurnished

 **Reeds Rains**

[reedsrains.co.uk](https://www.reedsrains.co.uk)

Wood Street, Widnes, Cheshire
£595 per month Unfurnished

**ZERO DEPOSIT GUARANTEE
AVAILABLE**

Brand New Refurbishment

AMAZING LOCATION!! This spacious mid-terrace home is situated within the heart of Widnes town centre and ideally located for easy access to motorway/ transport links .

In brief, this lovely home comprises a lounge, brand new fitted kitchen, two spacious double bedrooms and a three-piece bathroom suite. Additionally, this house boasts gas central heating and double glazed windows throughout.

Don't hesitate to get in...

Entrance Vestibule

Lounge

Front aspect Double Glazed PVC window, Double panel radiator, Brand new Carpets, Newly Decorated painted plaster walls. Feature fireplace with surround

Kitchen

Brand new kitchen. Double glazed windows to rear elevations, range of white gloss wall and base units, stainless steel sink unit with mixer, electric oven with 4 plate electric hob and cooker hood over. New vinyl flooring. Door leading to back door and bathroom.

Bathroom

Three piece white suite, WC, Bath with shower over and Basin. Brand new vinyl flooring, heated towel rail and double glazed obscure glass window.

Bedroom 1

Spacious room with brand new carpets, double glazed window to front aspect and central heating radiator.
4 Door Wardrobe

Bedroom 2

Spacious room with brand new carpets, double glazed window to rear aspect and central heating radiator

Exterior Rear

Enclosed rear yard with brick boundary wall and gate.

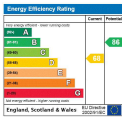
Council Tax Band: A

Reeds Rains Limited Registered in England at Howard House, 3 St Mary's Court, Blossom Street, York, YO24 1AH
Registered Number 2568254. VAT Reg No. 842 795 983.

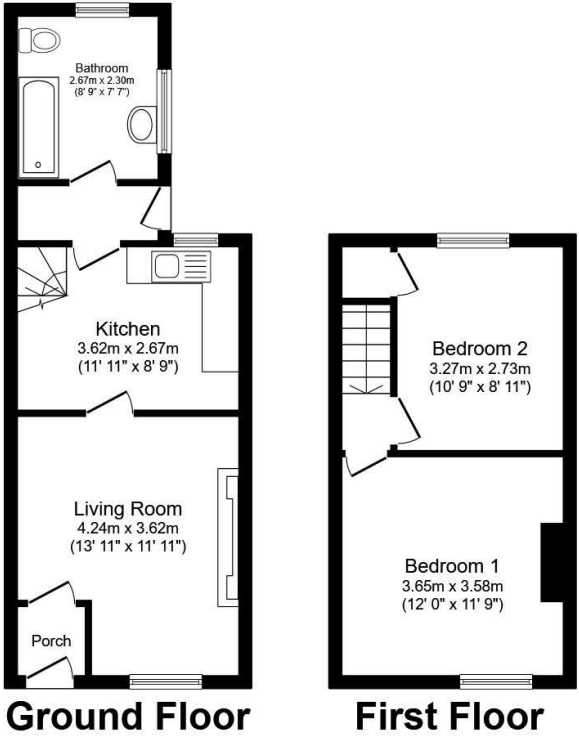
All Measurements
All Measurements are Approximate.

Laser Tape Clause
All measurements have been taken using a laser tape measure and therefore, may be subject to a small margin of error.

Floorplan Clause
Measurements are approximate. Not to Scale. For illustrative purposes only.



For full EPC please contact the branch.



Total floor area 59.4 sq.m. (640 sq.ft.) approx

This floor plan is for illustrative purposes only. It is not drawn to scale. Any measurements, floor areas (including any total floor area), openings and orientation are approximate. No details are guaranteed, they cannot be relied upon for any purpose and they do not form part of any agreement. No liability is taken for any error, omission or misstatement. A party must rely upon its own inspection(s). Plan produced for Reed Rains. Powered by www.focalagent.com